



Evans Army Community Hospital Center of Excellence Bariatric Program

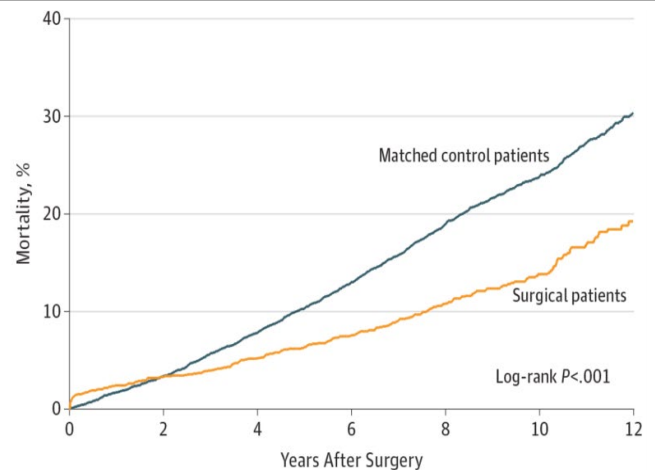


Is weight loss surgery the answer for your patient?

- In younger & middle-aged women & men, increased BMI increases the risk of dying prematurely
- **New Updated Criteria for Bariatric Surgery:**
 - **BMI \geq 35** (no comorbidity requirement)
 - **BMI 30-34.9:** with **Type 2 Diabetes**
 - **Age:** 18-65, >65 case by case
 - Healthy enough to undergo a major operation
 - Failed attempts at medical weight loss
 - Absence of drug and alcohol problems, No nicotine use
 - No uncontrolled psychological conditions
 - Consensus by multi-disciplinary team
 - Understands surgery and risks
 - No untreated potential medical causes of morbid obesity
 - **MUST BE DEDICATED TO A LIFETIME OF LIFESTYLE CHANGE AND FOLLOW-UPS**

Surgery Saves Lives

- Kaplan-Meier Estimated Mortality Curves for Surgical Patients and Matched Control Patients Estimated mortality rates were 2.4% at 1 year, 6.4% at 5 years, and 13.8% at 10 years for surgical patients; for matched control patients, 1.7% at 1 year, 10.4% at 5 years, and 23.9% at 10 years.



No. at risk	0	2	4	6	8	10	12
Matched control patients	7462	7114	5306	3878	2641	1407	472
Surgical patients	2500	2416	1868	1412	1004	552	185

• JAMA. 2015;313(1):62-70. doi:10.1001/jama.2014.16968

REFERRAL:

- If you have a patient you think may be a candidate please refer them to General Surgery: Bariatric Program via Genesis "referral 2.0"

Updated: 2023